

sapa:

Architectural **Aluminium** Solutions



Excellence 95 HV

Windows

Sapa Building System



Excellence 95 HV is high performance thermally broken four chamber system with a building depth of 95mm. The system is designed to meet the increasing demands of large surfaces and ribbon windows with high stability and thermal performances with a minimal sightline.



The hidden vent design makes the inward opening vent indistinctive from the fixed glazing. Excellence 95 HV is dedicated for creative architectural solutions and is a comprehensive solution for commercial, residential and industrial projects.

System features

- » Minimal sightline of only 67 mm for window with inward opening vent
- » Thermally broken four chamber system
- » Building depth of the frame is 95 mm
- » The vent depth is 91 mm
- » Large glass surfaces are possible
- » Glazing is possible from 21 till 42 mm for the vent and till 64 mm for the fix frame
- » Hidden drainage to avoid the requirement for cover caps
- » Optional invisible hardware
- » Windows with a height of 2,7m are possible without the need of reinforcement
- » Tilt slide with optional anti-burglary
- » Good acoustic performances
- » Glazing possible from the inside as well as the outside

Resistance

- » Excellence 95 HV uses several weather barriers, including specially designed gaskets, a large decompression chamber and internal drainage to assure perfect weather resistance
- » Punched drainage holes in vent and frame ensure effective water evacuation
- » Special finishing profiles allow additional building drainage
- » The concept of triple sealing provides an extremely high acoustic performance
 $R_w(C;C_{tr}) = 42 (-1;-4) \text{ dB (9GH/16(Argon)/8)}$
- » Weather resistance: C5 (EN 12210); E1050 (EN 12208); 4 (EN 12207)

Design

- » Straight line design at the outside as well as the inside
- » Excellence 95 HV was especially designed to create a very appealing and minimal design with a uniform look for ribbon windows
- » Even combined windows have a minimal sightline of only 85 mm
- » Esthetically there is no difference between the glazing gaskets for fix and opening parts
- » A comprehensive range of supplementary finishing profiles allows the fenestration to be integrated perfectly into the building
- » Vent, frame and transom profiles are available in a range of dimensions to meet stability and design requirements
- » A wide choice of hinges, handles and hardware finalise your specific needs



Maintenance

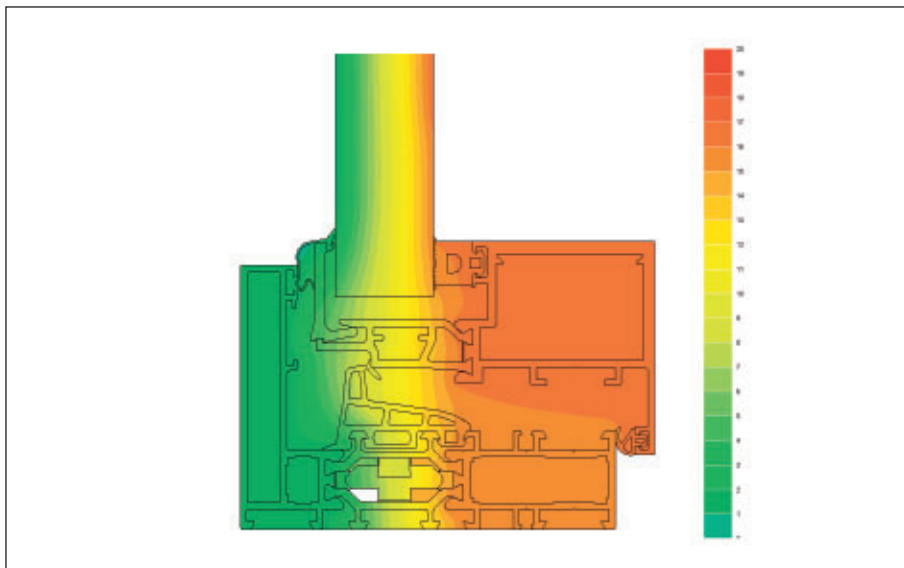
- » All Sapa Building System profiles are easily cleaned
- » Aluminium does not rust, rot or tear and the shape will not deform
- » Aluminium is a green product, it can be recycled infinitely without quality loss



Fabrication

- » Excellence 95 HV belongs to the Eurosystem range, it is complementary to other Eurosystem series and results in modularity between systems, allowing fabricators to offer maximum service without increasing stock levels
- » The Euronut groove accommodates all standard hardware
- » Three methods of connections are available. Frame and vent use the same corner connector
- » Punching tools specifically designed for the Eurosystem series ensure accurate and fast assembly
- » Sapa Building System offers its software SapaLogic, an open concept for automation, to fabricators who have a CNC machining center





Energy

- » Excellence 95 HV offers the highest standard of thermal insulation thanks to the combination of the 35 mm omega shaped glass fibre reinforced polyamide strips, polyethylene foam strips and the specially developed gaskets as shown in the detail
- » The solid and widely dimensioned central gasket and the glazing gaskets are specially designed to give an optimal result
- » The differently sized PE strips can be combined to insulate any profile combination
- » The high thermal performance level improves the overall building insulation, leading to a lower total energy consumption, thereby helping our environment
- » Following EN ISO 10077-2:
 $U_w < 1,5 \text{ W/m}^2\text{K}$ (double glazing $U_g = 1,1 \text{ W/m}^2\text{K}$)
 $U_w < 1,1 \text{ W/m}^2\text{K}$ (triple glazing $U_g = 0,5 \text{ W/m}^2\text{K}$)



Finishes

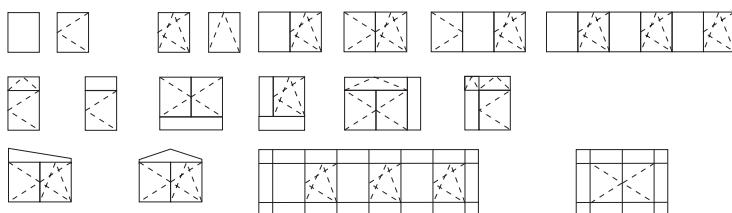
- » Over 400 powder coated paint colours in matt, gloss or satin
- » Unique wood effect, textured and textured metallic ranges are available
- » Anodised finish is also an option
- » Accessories can be supplied in corresponding colours to match the profiles
- » Polyamide thermal breaks allow for bi-colour finishes, so that the exterior design requirements do not infringe the interior design requests
- » Our surface finishes meet the highest standards of Qualicoat or Qualanod

Project support

- » Sapa Building System's experienced Project Team will advise you on the best product solutions
- » We can help you with pricing, strength calculations, building connections, thermal simulations, etc
- » Specific project solutions can be developed
- » Samples, catalogues, technical specifications and digital drawings are available

Applications

Windows



----- : inward opening ——— : outward opening

Dimensions

Min. sightline fixed frame	67 mm
Min. sightline window with inward opening vent	67 mm
Profile depth frame / Building depth	95 mm
Profile depth vent	80,7 mm
Max. window (width x height)	1350 x 2000 mm
Max. door (width x height)	1400 x 2200 mm

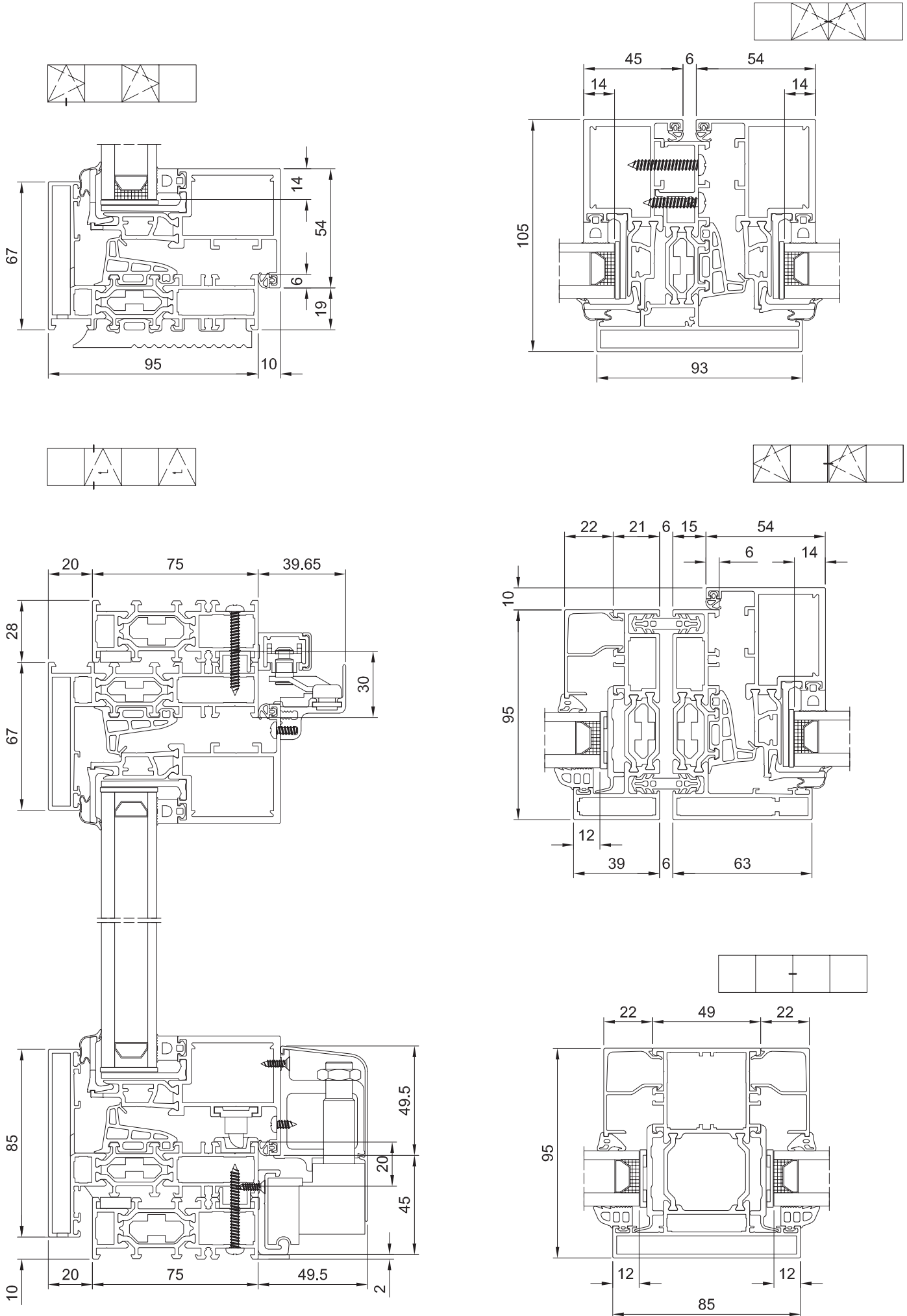
Glazing

Rebate height	14 mm
Infill thickness vent frame	20 - 28 mm
Glazing method	dry glazed with EPDM gaskets or silicon

Performances

Thermal break	35 mm omega shaped polyamides PA 6.6 GF25		
Thermal insulation	$U_f = 0,95 - 1,8 \text{ W/m}^2\text{K}$	EN ISO 10077-2	
Air permeability	PA3 / 4	600 Pa	STS 52 / EN 12207
Water tightness	E750	1200 Pa	STS 52 / EN 12208
Wind resistance, security test	C4	2000 Pa, security 3000 Pa	STS 52 / EN 12210
Acoustic insulation	$R_w (C; C_{tr}) = 47 (-2; -5) \text{ dB}$ (66.2A/20/44.2A)	EN ISO 717/1	
Forced entry resistance	class 2	ENV 1627 – 1630	

* This information is only an indication. For more information, please consult your local Sapa Building System branch.



Sapa Building System, is one of the largest suppliers of aluminium building systems in Europe and is part of the Swedish group Sapa. The core business is the development and distribution of aluminium profile systems. Sapa Building System aims for well-developed systems and project solutions offering a tangible added value to fabricators, architects, investors and home-owners.

Windows and Doors

Sliding Systems

Curtain Walls

Conservatories

Balustrades, gates and others

BIPV

Your local Sapa Building System fabricator

Sapa Building System nv

Postal address **Industrielaan 17, BE-8810 Lichtervelde** Tel. **+32 51 72 96 66** Fax **+32 51 72 96 89**

Postal address **Industriezone Roosveld 11, BE-3400 Landen** Tel. **+32 11 69 03 11** Fax **+32 11 83 20 04**

E-mail **buildingsystem.be@sapagroup.com** Website **www.sapabuildingsystem.be**

sapa: